



Nivel 1, Lección 11 | Level 1, Lesson 11

*** | Dotted Eighth with Sixteenth Notes

Versión beta | Beta Version

[Digitaciones](#) | [Fingerings](#) | [Drones](#)

Vídeo Español Lección 7B: [YouTube](#) | [mp4](#) | [Transcripción](#)

Vídeo English Lesson 7B: [YouTube](#) | [mp4](#) | [Transcript](#)

[Artículo \(English\)](#) | [Article](#)

Técnica | Technique

1. Notas largas | Long Tones

Musical notation for Long Tones exercise. It features a bass clef, a 4/4 time signature, and a tempo marking of ♩ = 60. The piece is in D major. The notation consists of five measures: the first measure has a half note D (p), the second has a half note E (f), the third has a quarter note F (p), the fourth has a dotted eighth note G (p) and a sixteenth note A (f), and the fifth has a dotted eighth note B (p) and a sixteenth note C (f). Slurs are placed over the first two measures and the last two measures. The name 'Ewell' is written in the top right corner.

2. Escalas de La mayor y Mib mayor | A Major and Eb Major Scales

Musical notation for A Major and Eb Major Scales. It features a bass clef, a 4/4 time signature, and a tempo marking of ♩ = 80. The piece is in A major. The notation consists of a single measure with a whole note scale: A-B-C-D-E-F#-G-A-B-A-G-F#-E-D-C-B-A. A slur covers the entire scale. The name 'Ewell' is written in the top right corner.

Musical notation for Eb Major Scale. It features a bass clef, a 4/4 time signature, and a tempo marking of ♩ = 80. The piece is in Eb major. The notation consists of a single measure with a whole note scale: Eb-F-G-A-Bb-C-Bb-A-G-F-G-A-Bb-A-G-F-G-A-Bb-A-G-F-G-A-Bb-A-G-F-G-A-Bb-A. A slur covers the entire scale. The number '5' is written at the beginning of the staff. The name 'Ewell' is written in the top right corner.

3. Ritmos (marque e interprete) | | Rhythm (Tap and Perform)

Musical notation for Rhythm exercise. It features a bass clef, a 2/4 time signature, and a key signature of two sharps (D major). The piece is in 2/4 time. The notation consists of three staves of music. The first staff has a sequence of eighth notes: D, E, F#, G, A, B, A, G, F#, E, D. The second staff has a sequence of eighth notes: D, E, F#, G, A, B, A, G, F#, E, D. The third staff has a sequence of eighth notes: D, E, F#, G, A, B, A, G, F#, E, D. The name 'Ewell' is written in the top right corner.

Copyright © 2023-24 by Terry B. Ewell.

4. Entonación y sincronización | Intonation and Synchronization

Ewell

$\text{♩} = 60$

Bassoon

Piano

4

Bsn.

Pno.

mp3, piano, mm. 60: [A442](#) | [A440](#)

5. Tocar en eco | Echo Playing

Escucha la música y luego tócala. El ejercicio completo está al final de la lección |
Listen to the music and then play it. The full exercise is at the end of the lesson.

$\text{♩} = 70$

Eco | Echo: [442](#) | [440](#)

Ejercicio musical | Etude

$\text{♩} = 100$ Ewell

9

Weissenborn, p. 25

e. Andante.

p *dolcissimo*

Melodía | Melody

Subo Subo Canción popular Argentina | Folk Song, Argentina

arr. Ewell

9

Derribar al hombre | Blow the Man Down
Canción popular EE. UU. | Folk Song, USA

Sandburg, p. 404, arr. Ewell

Musical score for 'Derribar al hombre | Blow the Man Down' in bass clef, 3/4 time, and B-flat major. The score consists of three staves. The first staff starts with a treble clef and a key signature of one flat. The second staff is marked with the number 12. The third staff is marked with the number 24. The music features a mix of eighth and quarter notes, with some slurs and accents.

Cantico religioso | Religious Song (1855)
Brasil | Brazil

Francisco Manuel da Silva, arr. Ewell

Musical score for 'Cantico religioso | Religious Song (1855)' in bass clef, 3/4 time, and B-flat major. The score consists of two staves. The first staff starts with a treble clef and a key signature of one flat. The second staff is marked with the number 7. The music features a mix of quarter and eighth notes, with some rests and slurs.

Viva Panamá | Viva Panama
Canción popular, Panamá | Folk Song, Panama

arr. Ewell

5

9

13

17

mp3, Ewell, fagot (bassoon) 1 mm. 88 [442 440](#) | mm. 104 [442 440](#) | | fagot (bassoon) 2 mm. 88 [442 440](#) | mm. 104 [442 440](#)

No. 6, "Cromáticos Dramáticos" | No. 6, "Dramatic Chromatics" (2017)

Christopher Weait, Duets for New Bassoonists, Vol. 1, weaitmusic.com

Used by Permission

Observe que las notas más graves suenan más fuertes. Notice that lower notes sound louder.

1 ♩ = 108

Bn1

Bn2

5

9

13

mp3, Ewell, fagot (bassoon) 1 mm. 108 [442 440](#) | fagot (bassoon) 2 mm. 108 [442 440](#)

Extracto | Excerpt

[Extractos de fagot con dificultad escalonada | Graded Bassoon Excerpts](#)

Gustav Mahler, *Symphony No. 1, Movement 3.*

<http://petrucci.mus.auth.gr/imglnks/usimg/8/88/IMSLP43235-PMLP15427-Mahler-Sym1.Bassoon.pdf>

Deben jugarse con tono sonoro Re y el metrónomo.

Practice this with a D drone and the metronome.

mm. = 60.

Feierlich und gemessen, ohne zu schleppen



Pyotr Tchaikovsky, *Symphony No. 2, Mvt. 1, Bassoon 2. Andante Sostenuto*

<https://s9.imslp.org/files/imglnks/usimg/a/a9/IMSLP38164-PMLP02723-Tchaikovsky-Op17.Bassoon.pdf>



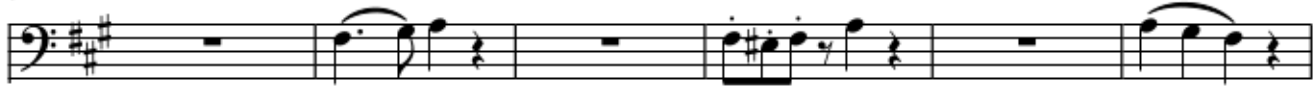
Reproducción de eco | Echo Playing

♩ = 70

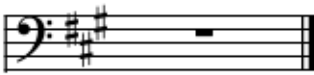
Ewell



6



12



Método

<https://www.2reed.net/Metodo/>



<https://2reed.net/>

<https://terryewell.com/>

Versión beta | Beta Version