

# Método

## Nivel 1, Lección 18 | Level 1, Lesson 18

\*\*\* | Improvisation on a Pentatonic Scale

### Versión beta | Beta Version

[Digitaciones](#) | [Fingerings](#) | | [Drones](#)

Vídeo Español Lección 4B Afinación y el uso de pedales: [YouTube](#) | [mp4](#) | [Transcripción](#)

Video English Lesson 4B Using Drones: [YouTube](#) | [mp4](#) | [Transcript](#)

[Artículo \(English\)](#) | [Article](#)

### Técnica | Technique

Todos los estudios técnicos se deben tocar con drones y metrónomo.  
All technical studies should be played with drones and the metronome.

#### 1. Notas largas | Long Tones

Escoja varias notas para practicar la dirección de 5 en notas largas.  
Choose various notes for 5-Drive long tones.

Ejemplo | Example:

Musical notation for long tones exercise. The tempo is marked as  $\text{♩} = 60$ . The notation is in bass clef with a 4/4 time signature. It consists of two phrases. The first phrase starts with a half note G2 (marked *p*), followed by a half note F2 (marked *f*), and ends with a half note E2 (marked *p*). The second phrase starts with a half note D2 (marked *p*), followed by a half note C2 (marked *f*), and ends with a half note B1 (marked *p*). Above the notes, fingerings are indicated: 1 2 3 4 5 4 3 2 1 for the first phrase, and 1 2 3 4 5 4 3 2 1 for the second phrase. The name 'Ewell' is written at the end of the staff.

#### 2. Escalas | Scales

Musical notation for scales exercise. The tempo is marked as  $\text{♩} = 80$ . The notation is in bass clef with a 4/4 time signature. It consists of three lines of scale runs. The first line starts with a half note G2 (marked *p*), followed by a half note F2 (marked *f*), and ends with a half note E2 (marked *p*). The second line starts with a half note D2 (marked *p*), followed by a half note C2 (marked *f*), and ends with a half note B1 (marked *p*). The third line starts with a half note G2 (marked *p*), followed by a half note F2 (marked *f*), and ends with a half note E2 (marked *p*). The name 'Ewell' is written at the end of the first line.

Copyright © 2023-24 by Terry B. Ewell.

### 3. Arpeggios | Arpeggios

♩ = 80

Ewell

### 4. Ritmos (marque e interprete) | | Rhythm (Tap and Perform)

Ewell

### 5. Entonación y sincronización | Intonation and Synchronization

#### O God, Our Help in Ages Past (1708)

♩ = 100

William Croft, arr. Ewell

Bassoon

Organ

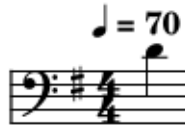
Bsn.

Org.

mp3, órgano (organ), mm. 100: [A442](#) | [A440](#)

## 6. Tocar en eco | Echo Playing

Escucha la música y luego tócala. El ejercicio completo está al final de la lección | Listen to the music and then play it. The full exercise is at the end of the lesson.



Eco | Echo: [442](#) | [440](#)

## Ejercicio musical | Etude

**Moderato.** La llave del Do | C Flick Key Weissenborn, Op.8/1, p. 7

## Melodía | Melody

### Himnos, EE. UU. | Hymns, USA

#### Himno de primavera | Spring Hymn (1903)

Video: [YouTube](#) | [mp4](#) | [mov](#) | [Windows Media](#)

[https://en.wikipedia.org/wiki/File:Crosby\\_Spring\\_Hymn.jpg](https://en.wikipedia.org/wiki/File:Crosby_Spring_Hymn.jpg), Fanny Crosby, arr. Ewell

**Grande es tu fidelidad | Great is Thy Faithfulness (1923)**

William Marion Runyan, arr. Ewell

9

Musical notation for the first piece, showing two staves of music in bass clef, 3/4 time, with a key signature of two sharps (F# and C#). The first staff contains the first line of music, and the second staff contains the second line, starting with a measure rest marked '9'.

**Santo, santo, santo | Holy, Holy, Holy (1861)**

John Bacchus Dykes, arr. Ewell

9

Musical notation for the second piece, showing two staves of music in bass clef, 4/4 time, with a key signature of two sharps (F# and C#). The first staff contains the first line of music, and the second staff contains the second line, starting with a measure rest marked '9'.

**Componer o improvisar una canción en esta escala**  
**Compose or Improvise a Song on this Scale**

**Escala pentatónica | Pentatonic Scale**

♩ = 80

Ewell

Musical notation for the Pentatonic Scale, showing a single staff of music in bass clef, 4/4 time, with a key signature of two sharps (F# and C#). The scale is written as a single melodic line with a slur over it, starting with a quarter note and ending with a quarter rest. The tempo marking is ♩ = 80.

**Que maravilloso amor es este | What Wonderous Love is This (~1811)**

arr. Ewell

$\text{♩} = 60$

The image shows a musical score for two bassoons. The score is written in bass clef with a 3/4 time signature. The tempo is marked as quarter note = 60. The music consists of two systems of staves. The first system contains measures 1 through 11, and the second system contains measures 12 through 21. The notation includes various note values, rests, and slurs. The piece concludes with a double bar line at the end of measure 21.

**mp3: fagot (bassoon) 1 | fagot (bassoon) 2**

No. 3, "Rebotando" | No. 3, "Bouncing Around" (2017)  
Christopher Weait, Duets for New Bassoonists, Vol. 2, [weaitmusic.com](http://weaitmusic.com)  
Used by Permission

Introducir cambios dinámicos repentinos. Introducing sudden dynamic changes.

1  $\text{♩} = 112$

Bn1  
*mf*

Bn2  
*mp*

9 17

*p* *p* *f* *p* *mf*

18 25

*p* *p*

27

*f* *p* *mf*

35

*f* *f*

mp3: fagot (bassoon) 1 | fagot (bassoon) 2

## Extracto | Excerpt

<http://vmirror.imslp.org/files/imglnks/usimg/7/7a/IMSLP415118-PMLP02735-Tchaikovsky-Op36-04.bssns.pdf>

Tchaikovsky — Symphony No. 4 in F Minor, Op. 36

10

*Fagott 2*

Musical score for Fagott 2, measures 68-74. The score is in bass clef with a key signature of one flat (F minor). Measure 68 starts with a dynamic marking of *mf*. The music consists of eighth and sixteenth notes with various articulations like accents and slurs. Measure 74 ends with a first ending bracket.

## Reproducción de eco | Echo Playing

Musical score for Echo Playing. The tempo is marked  $\text{♩} = 70$ . The score is in bass clef with a key signature of one sharp (D major) and a 4/4 time signature. The music consists of eighth and sixteenth notes with rests. The name "Ewell" is written in the top right corner.

 <a href="https://www.2reed.net/Metodo/">https://www.2reed.net/Metodo/</a>	 <a href="https://2reed.net/">https://2reed.net/</a>	<a href="https://terryewell.com/">https://terryewell.com/</a>
------------------------------------------------------------------------------------------------------------------------------------------------------------------	--------------------------------------------------------------------------------------------------------------------------------------------	---------------------------------------------------------------

## Versión beta | Beta Version